

TIS EPREL Cloud service

Executive summary

One of the integral and major EU goals is the environmental sustainability and technological modernisation supporting the business landscape. In accordance with the goals and strategy, the EU has decided to standardize and digitalize the existing energy labels by providing a legal and technical framework. The regulation mandates manufacturers to upload energy labels and adjacent technical specifications to a central EU database. IBM and TIS are helping manufacturers to comply by offering IBM SCBN, IBM FTS and TIS AS4 BB cloud based services, providing an end to end solution.

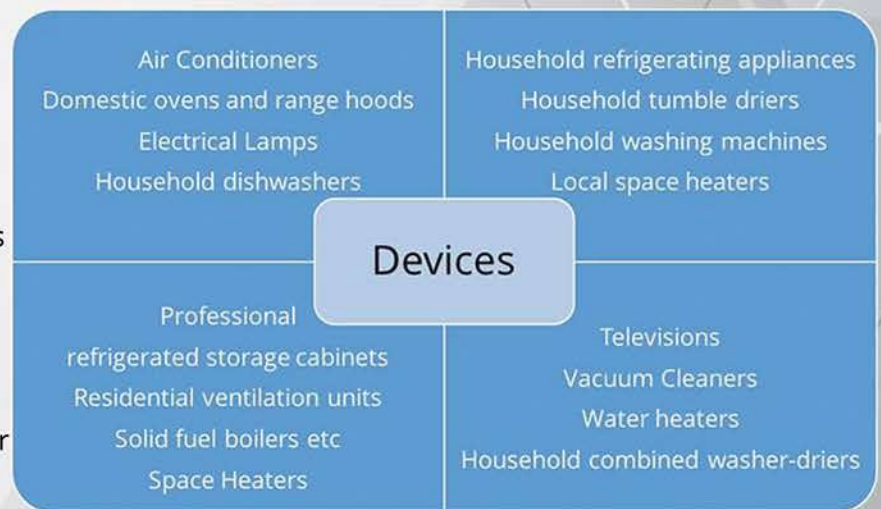
Energy consumption and its progressive growth

Since the invention of electricity a logical trend was on horizon, millions of devices have been invented until present. From basic appliances used on a daily basis to industrial devices used in production processes, from scientific tools to children's toys. During the past century engineering and computer developments have enabled us to develop highly sophisticated devices used in all aspects of life.

Even though, such advancements have a huge positive impact on society, the other side of the coin cannot be neglected. Huge technological leaps, lower cost of production and commercial availability have "raised a new breed" of consumers, which in result takes its toll on energy consumption in a negative way. In order to tackle the future challenges and energy needs, the EU has multiple ongoing projects and activities to minimize the impact on the society and environment.

One of the major activity is the Energy labeling of devices and uploading of the data to a central EU database.

As stated any manufacturer producing the following types of devices will need to upload their data



The project is supported by a legal and technical framework:

<https://eur-lex.europa.eu/eli/reg/2017/1369/oj>

The name of the project is **European Product Registry for Energy Labelling (EPREL)**.





TIS EPREL Cloud service

The mandated payload to be uploaded consists of two files, energy labels and device specifications. As mentioned, the EU has specified the XML format for each device type through EPREL but also PDF's like user manuals will be uploaded. In addition to the file types, a transportation method has also been specified by EPREL; specifically AS4, in accordance with the EU CEF AS4 e-delivery building block, which shall be used for the system-to-system upload.

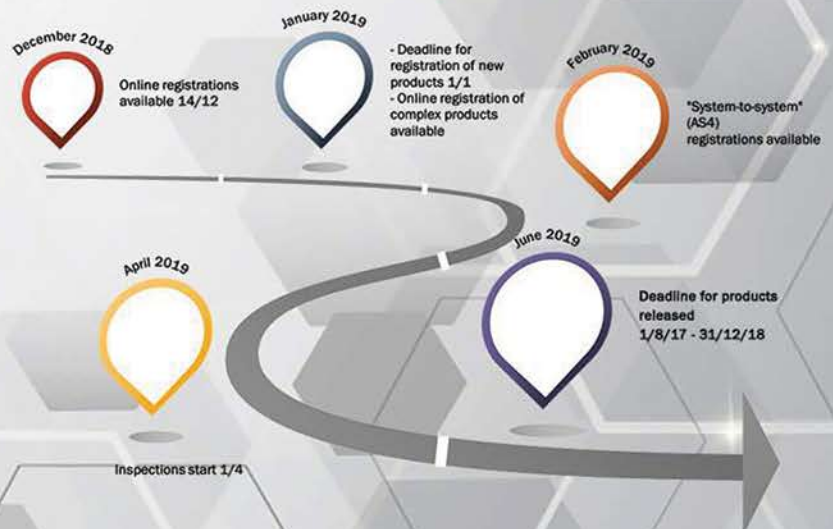
There are two purposes of the central database, a public purpose and the purpose of regulatory audits of the uploaded data. The EU public will be able to check the energy data ratings of the aforementioned devices when deciding what specific device to acquire, resulting in manufacturers producing more efficient devices that consume less energy.

On the other hand each member state will also have access to an additional set of device data and will be able to audit the uploaded data integrity and act in accordance with EU member state laws.

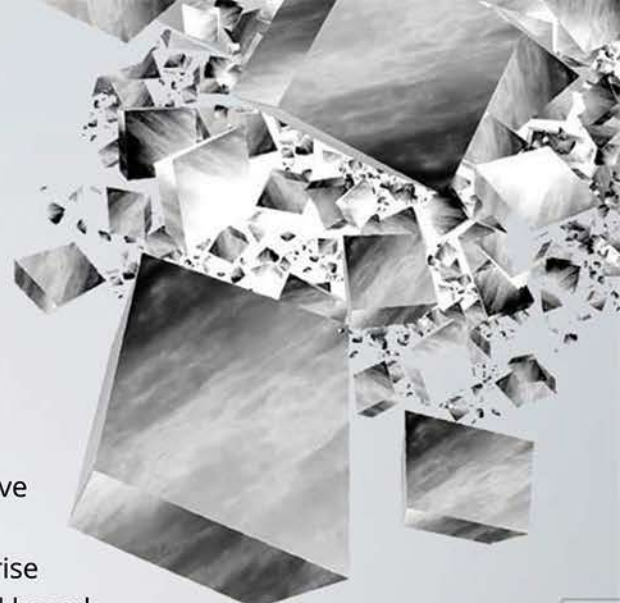
In some cases member states laws can result in product withdrawal from the market, which can have significant negative financial impact on the producers.

When the manufacturers are supposed to be compliant

As stated in the Regulation and shown in the visual below, from 1 January 2019 any new model shall be registered in the DB before placement on the market. Until 30 June 2019, all models placed on the market 17 months before the launch of the DB (and which units of the model are still being placed on the market from 1 August 2017 to 31 December 2018) shall be registered in the DB. Only models placed on the market before 1 August 2017 and not placed in the market anymore from 1 January 2019 may be optionally registered.



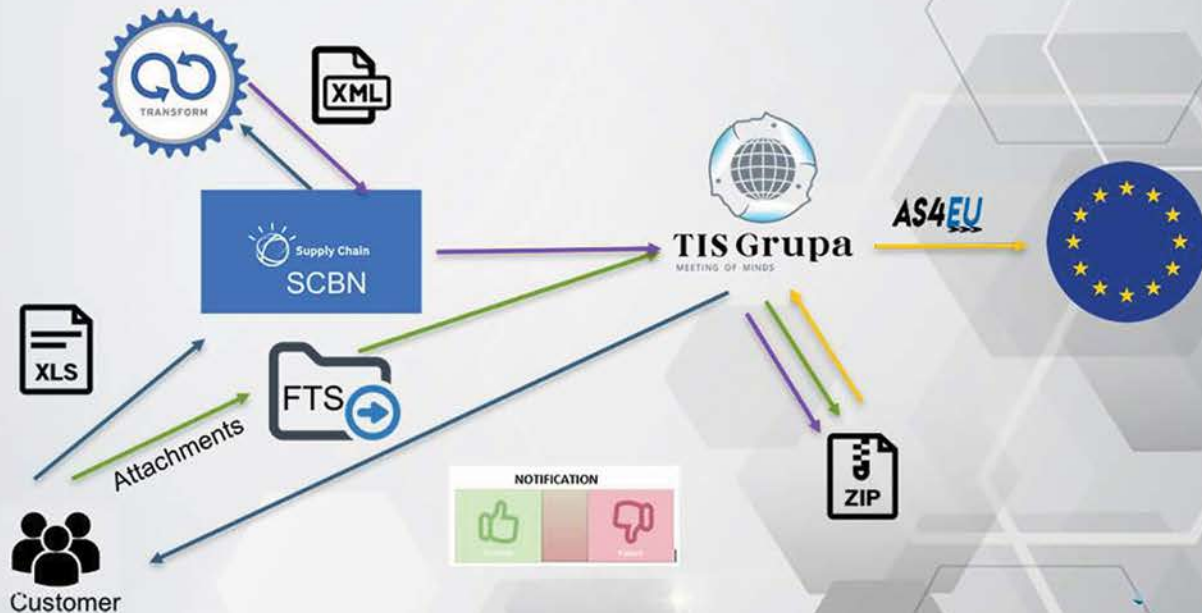
TIS EPREL Cloud service



How can we help make you compliant?

TIS will celebrate 30 years next year and during this period they have gathered invaluable knowledge and skills while providing services to our clients on a worldwide level. Having experience with enterprise integration projects and following trends we are able to offer cloud based services for any enterprise that needs to comply with the EPREL EU regulations and the technical standards imposed by them.

In cooperation with IBM, we are able to provide transformation services from your native formats into the EPREL XML prescribed format regardless of the device type. After the data transformation, we can transport the payload by using **TIS AS4 BB** cloud service and notify your organisation.



In conclusion

Each year the EU is launching new regulations and supportive projects. While they are bringing standardization and optimization, they are also bringing many organizational changes for companies operating in the EU, which can be cumbersome and actually streamline companies into non-core projects.



Therefore, our EPREL service, combining skills and knowledge of TIS and IBM, can give your company a full EPREL compliant service.

In result, your company can dedicate their resources and time to core business activities and develop more efficient devices for the benefit of the public and environment.